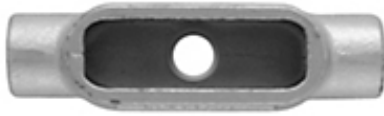
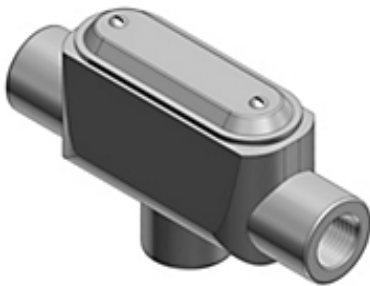




Catalog Number: TB37
Product ID: 7TAD013230R0033
UPC Number: 78621028125
EAN Number: 05415022229066
Status: A



Actual



Representative

1 Inch Form 7 (TB) Conduit Body, Body Material Gray Iron with Zinc Plating and Baked on Epoxy Powder Coat with BlueKote Internal Coating for Use with Rigid/IMC Conduit

- Eliminates rough internal surfaces that can cut into cable jacket, insulation and conductors during pulling and also reduces installation time and risk of installer strain.
- Triple-layer protection...including two layers of epoxy coating which stops corrosion in its tracks.
- Bodies are designed with a flat back, allowing more cubic inch capacity.
- T&B Form 7 bodies and covers are interchangeable with Crouse-Hinds and Appleton's Form 7 bodies and covers.
- Conduit bodies make 90 degree bends in conduit runs, act as mounting outlets for wiring devices and lighting fixtures and to provide access to conductors for maintenance and future system changes.

North American Specifications (UNSPSC)

UNSPSC	39131708 Electrical conduit fitting body
IGCC	5563 Electrical conduit fitting body
Type	Form 7 Conduit Body
Special Features	BlueKote Teflon Based Internal Finish Provides a Slick, Easy-Glide Internal Surface Which Significantly Lowers The Amount of Force Necessary to Pull Wires.
Application	Conduit Bodies are Installed In Conduit Systems to Connect Sections, Act As Pull Outlets When Conductors are Being Installed and Provide Easy Access for Splices In Branch Conductors.
Standard	UL E2969, CSA
Hub Size	1 in
Form	Form 7
Material	Gray Iron
Finish	Zinc Plated with Epoxy Powder Coat

Packaging

Outer Quantity	2
Outer Dimensions (inches)	7.4x6x3.75
Weight Uom	280 lbs. per 100

Documents / Support Tools

Technical Drawing / Data Sheet US	Available on Website
-----------------------------------	----------------------